

# Welcome to HELUG 2019



**LENEL·S2**

 **United Technologies**

**ASSA ABLOY**  
Opening Solutions

**W**

UNIVERSITY *of*  
WASHINGTON

**traka**  
ASSA ABLOY

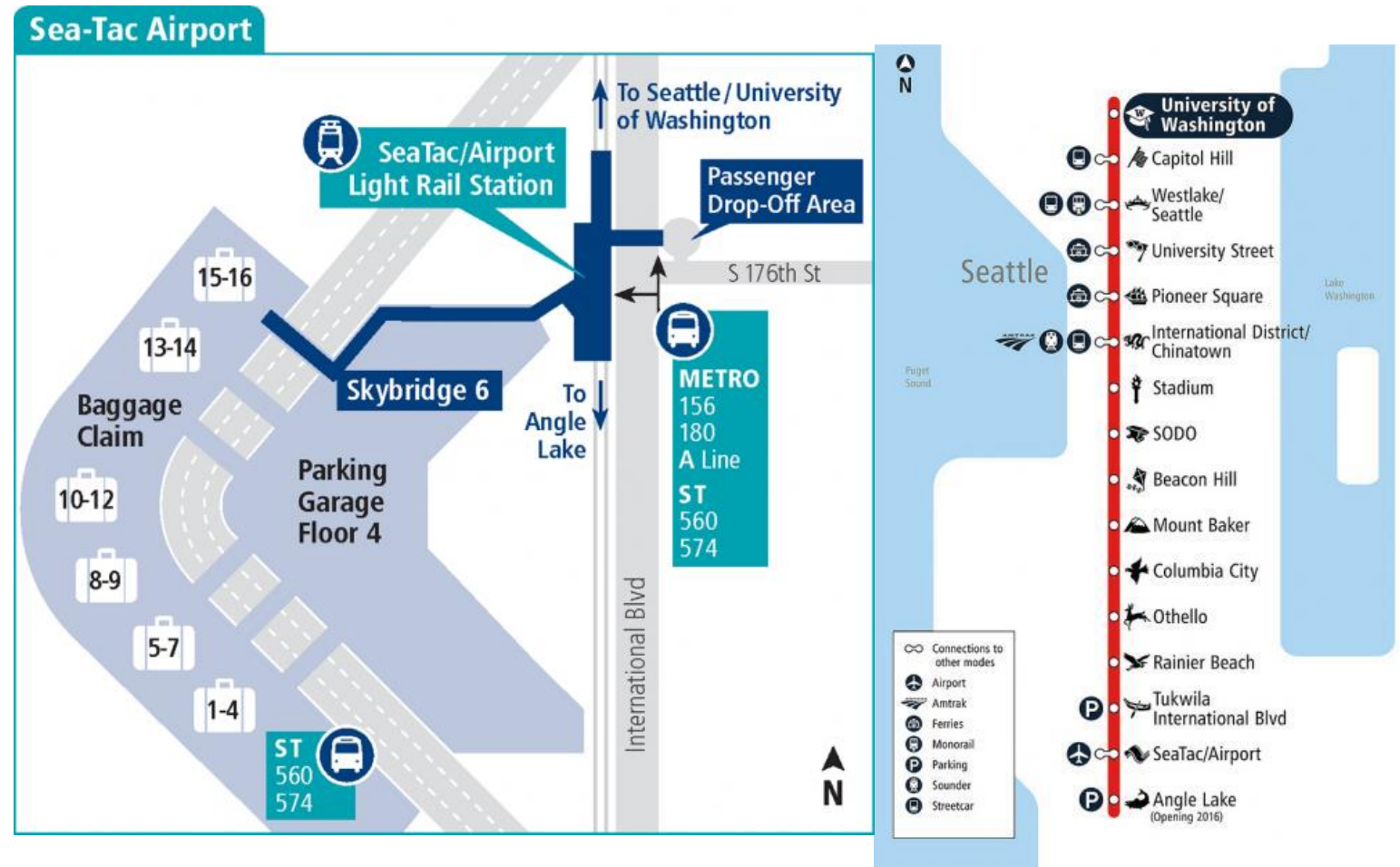
**HID**

**STANLEY**  
Security Solutions

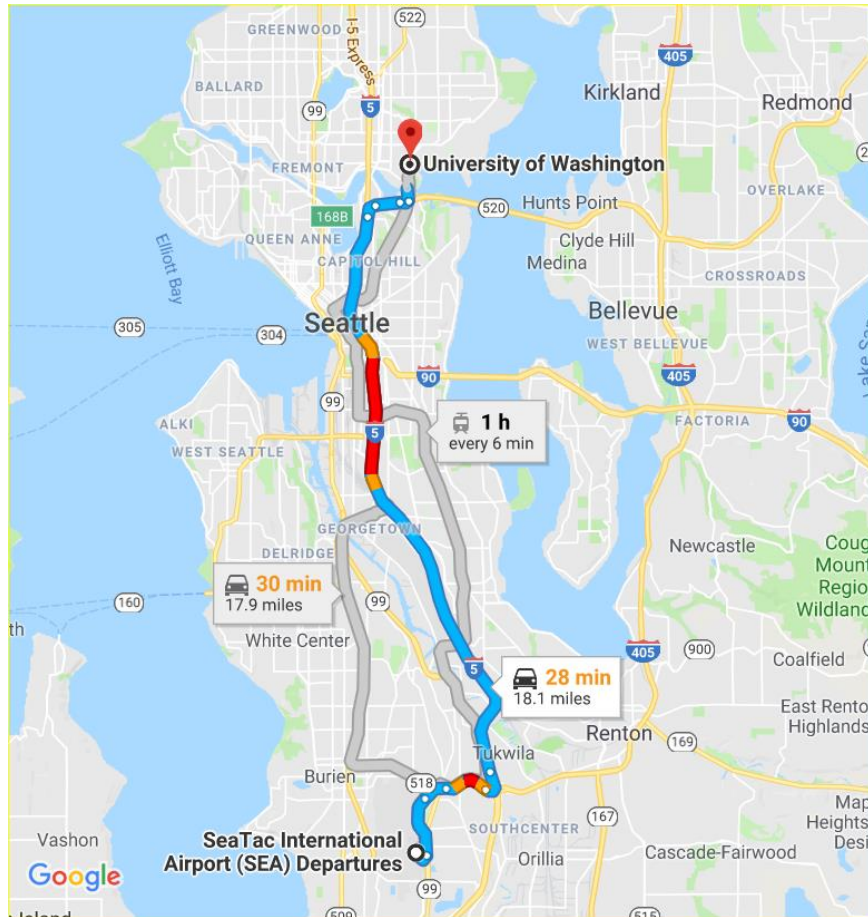
# AIRPORT TRANSFERS

The UW Campus is not parking Friendly. What is available, is expensive and is not conveniently located to the conference venue. Cab and Uber fares from SeaTac to the Hotels will run approximately \$50-\$70 depending on vehicle type and service.

Light departs every 6-15 minutes depending on time of day. The UW light Rail has great pick up drop off zone for Uber and abs.



# Location Map





# Silver Cloud Hotel Seattle – University District



- 30 minute walk from Light Rail
- Complimentary parking, Wi-Fi, shuttle to Light Rail and to conference site.
- Complimentary Breakfast
- 15 Minute walk to Conference Venue
- Parking - \$15 per night plus Tax

# Watertown Seattle – University District



- 30 minute up uphill walk from Light Rail
- Complimentary parking, Wi-Fi, shuttle to Light Rail and to conference site.
- Includes Continental Breakfast
- 15 Minute walk to Conference Venue

# University Inn Seattle – University District



- 30 minute up uphill walk from Light Rail
- Complimentary parking, Wi-Fi, shuttle to Light Rail and to conference site.
- Includes Continental Breakfast
- 15 Minute walk to Conference Venue

# Hotels with Conference Rates

## Silver Cloud Inn

- Double Queen, \$260 plus Tax
- Single King, \$240 plus Tax

## Watertown

- Single Double Bed, \$240 plus Tax
- Deluxe King, \$250 plus Tax

## University Inn

- Single Double Bed, \$229 plus Tax
- Deluxe King, \$229 plus Tax